

► Features

- Flexible system for system integration & connectivity
- Compatible with any CASY chassis
- Solderless connections
- 1.5 mm steel construction
- Structured and scratch resistant black powder coating
- Assembly screws included

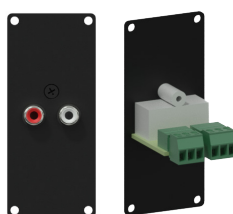
solderless



► Modules overview



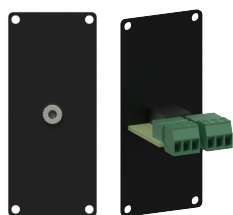
CASY131/B
2 x RCA gender



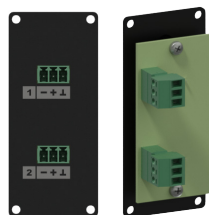
CASY132/B
2 x RCA to terminal block



CASY135/B
3.5 mm Jack pigtail



CASY136/B
3.5 mm Jack to terminal block



CASY138/B
2 x Terminal block to terminal block

► Specifications

ARTICLE	CONNECTION / CUTOUT	MODULE SPACE	CONNECTION TYPE	DIMENSIONS	WEIGHT
CASY131/B	2 x RCA	1 Space	2 x RCA female to 2 x RCA female (gender)	35,5 x 82,1 mm	0.057 Kg
CASY132/B	2 x RCA	1 Space	2 x RCA female to 3-pin terminal block	35,5 x 82,1 mm	0.044 Kg
CASY135/B	3.5 mm stereo jack	1 Space	3.5 mm jack female to 3.5 mm jack female pigtail	35,5 x 82,1 mm	0.046 Kg
CASY136/B	3.5 mm stereo jack	1 Space	3.5 mm jack female to 3-pin terminal block	35,5 x 82,1 mm	0.043 Kg
CASY138/B	2 x 3-pin terminal block	1 Space	Terminal block to terminal block (3-pin - 3.81 mm pitch)	35,5 x 82,1 mm	0.047 Kg