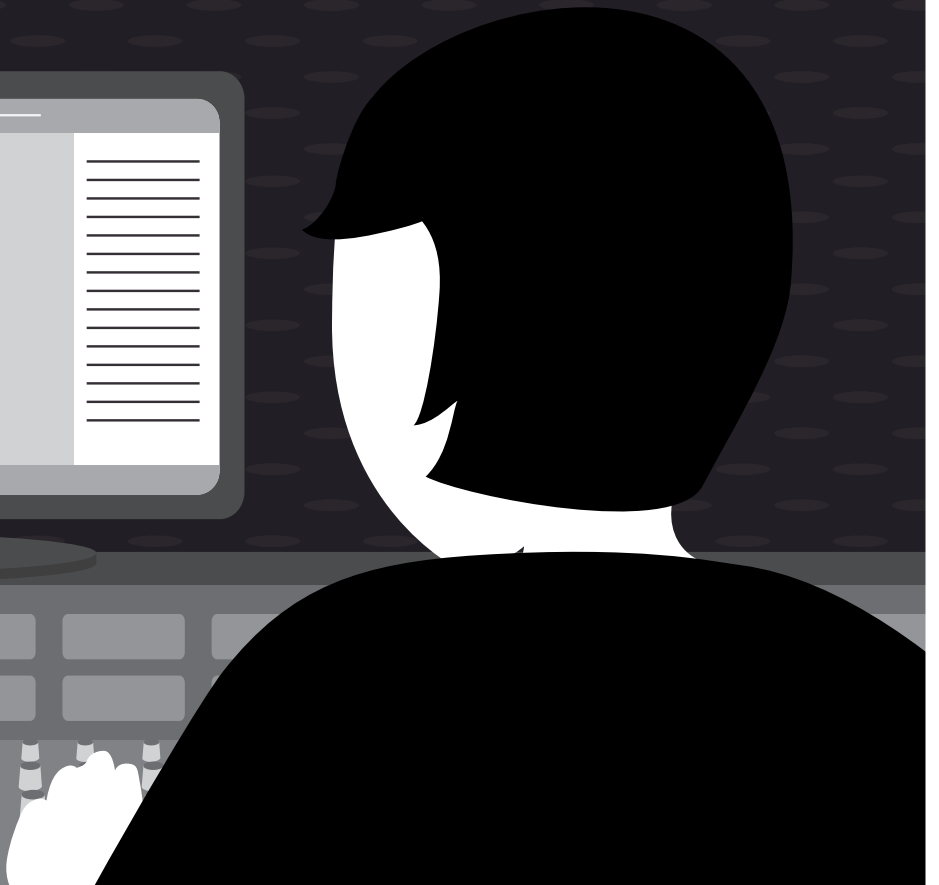




SENNHEISER

You're
in Control



Wireless Systems Manager



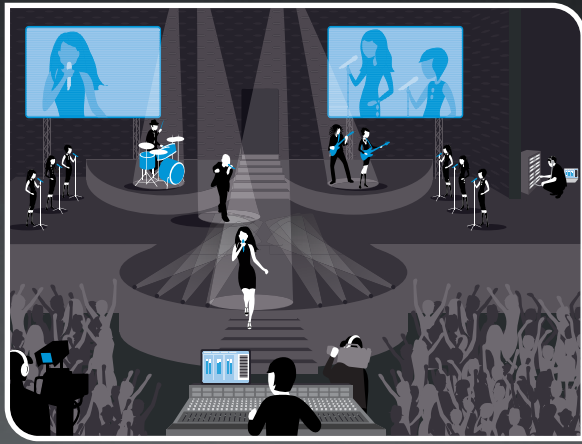
Absolute control over your wireless audio transmission. Anytime. Anywhere.

The new dimension of real-time monitoring: the Wireless Systems Manager (WSM) is your software solution for monitoring and remotely controlling wireless Sennheiser microphone and monitoring systems. Using this software, you can constantly monitor connected devices and easily configure them at any time. The WSM ensures maximum reliability and control with wireless audio transmissions and also saves valuable time when setting up your system.

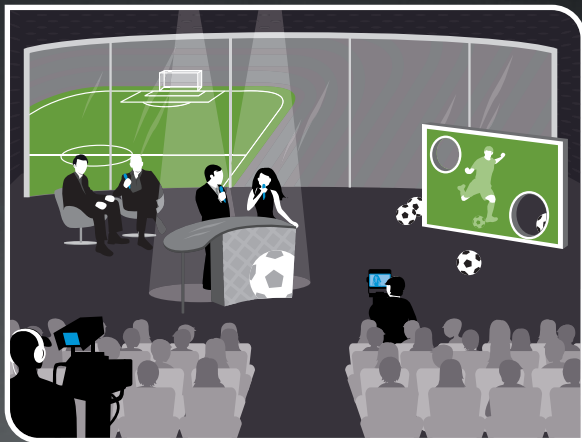
The Wireless Systems Manager is the first choice in live performances, TV studios, theaters and musical productions. The extensive range of functions ensures that your production runs smoothly.

The software integrates wireless microphones and monitoring systems as well as professional and semi-professional series of different generations (3000, 2000, evolution wireless  and ) into a single platform.

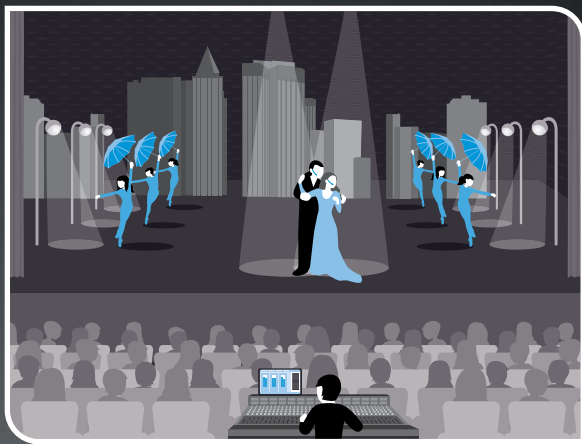
Download the Wireless Systems Manager free of charge at www.sennheiser.com. Thanks to regular updates, you are always on the cutting-edge.



Live on stage Concerts and shows become unforgettable experiences. For this to happen, you need a system that you can depend on 100 % of the time. The WSM makes configuration more reliable and easier than ever before, particularly in constantly changing venues when on tour.



Broadcast/TV studio Whether recorded or broadcast live: perfect sound and reliability are the fundamental requirements for a successful television broadcast. Using the Wireless Systems Manager, you can monitor all connected devices and keep a cool head especially during hectic production schedules. The strengths of the software become especially apparent on complex studio networks. With special administrative rights, you can also manage the workflow in a large team and ensure that the show runs smoothly and successfully.



Theater During spectacular stage productions and musicals with many performers and channels, control during every scene is fundamental to a successful show. Using the Wireless Systems Manager, you can maintain an overview and ensure interference-free and reliable audio transmission.



Office The preparation of major events require absolute concentration. Using the Wireless Systems Manager, you can make the adjustments for your event in peace and quiet from the office thanks to the off-line mode.

Wide range of functions

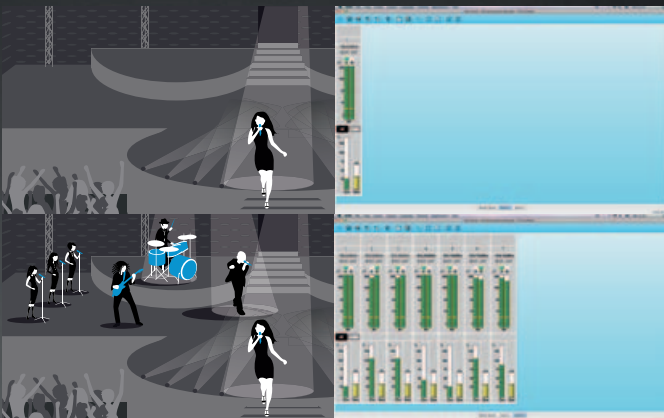
fast and clear



Off-line configuration: Time saving and comfort Using the WSM, you can prepare all of your settings in off-line mode without having the necessary hardware connected. You can configure your system on the computer practically anywhere – even in the office or the tour bus – as you need it for the production later on. At the production venue, the WSM loads the configuration, defined off-line, into the connected devices. This saves valuable time and you can focus on what matters most: perfect sound for your event.



Multi-Access: control and reliability on the network The WSM turns you into a team manager: you can provide essential information to colleagues located elsewhere and check device settings online without having to leave the room. You can determine which users have the right to change settings in the system, with up to six PCs or Macs used at the same time on the network.



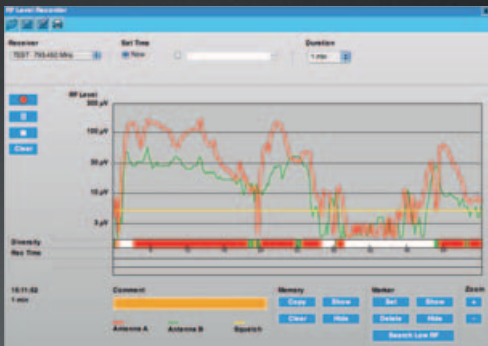
"Scenes": Able to handle any event Depending on how many channels you operate, the WSM can be flexibly adapted to your area of application. You can specify which panels you would like displayed at a certain point in time in what order and at what size. These scenes give you a realtime overview over your system.

One-of-a-kind Tools

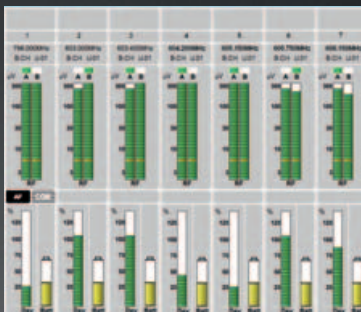
flexible and reliable



RF spectrum analyzer More up-to-date and more dependable than any list, the WSM displays the frequencies available for your transmission within a matter of seconds. At a glance, you can see the size of the available slots in the frequency spectrum and monitor the field strength of all radio signals present.



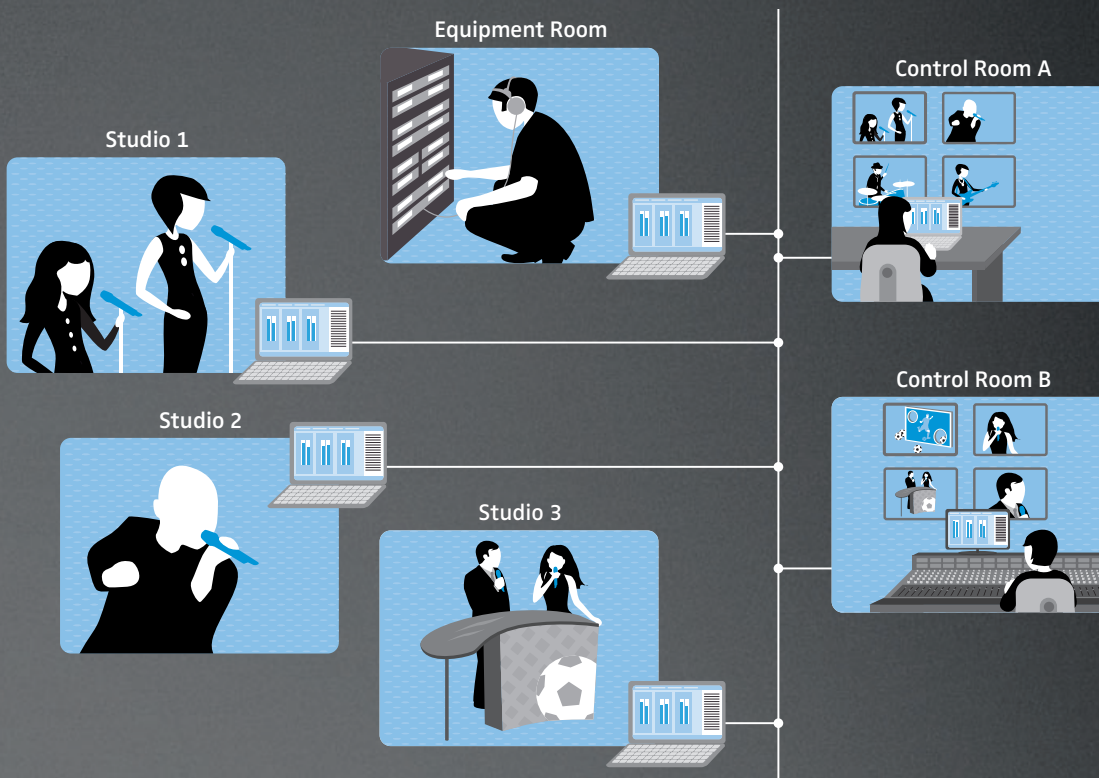
RF level recorder Using this flexible tool, you can ensure that your wireless microphone system is transmitting the individual signals perfectly to every point of the stage or studio. At each antenna, the RF level recorder determines the signal strength of a wireless transmitter, based on its position in the room and precisely locates points of poor reception. This results in interference-free sound and reliable transmission.



Panels All important information at a glance, even during hectic productions: the panels of the WSM display all the necessary parameters of the system in real-time, such as the RF level, audio level, name, frequency, status of the battery and more. The intelligent warning system informs you of possible irregularities quickly and reliably, such as if a battery has a low charge. You can customize the size and display format of the panels (e.g. night mode) for the individual production.

System example

TV studio



There are many different sides to working with the Wireless Systems Manager, depending on the size of your system. The full capacity of this intelligent software unfolds when used with complex multi-channel systems.



WSM online Discover the Wireless Systems Manager online. Go to "www.sennheiser.com/WSM" for further information and a comprehensive range of application examples. You can also download the newest version of the WSM directly from this website for free.

System components

Hardware

	Type	Size	Switching bandwidth	IR-sync between transmitter and receiver	Network connection	Audio output
EM 3731 / EM 3732 / EM 3732-COM	single / dual receiver	19"	90 MHz	yes	Ethernet	XLR and AES-EBU
EM 2000 / EM 2050	single / dual receiver	19"	up to 75 MHz	yes	Ethernet	XLR and 6,3 mm-Klinke
EM 500 [Ⓔ]	single receiver	½ 19"	42 MHz	yes	Ethernet	XLR and 6,3 mm-Klinke
EM 300 [Ⓔ]	single receiver	½ 19"	42 MHz	yes	Ethernet	XLR and 6,3 mm-Klinke
SR 2000 / SR 2050	single / dual transmitter	19"	up to 75 MHz	yes	Ethernet	XLR and 6,3 mm-Klinke
SR 300 IEM [Ⓔ]	single transmitter	½ 19"	42 MHz	yes	Ethernet	XLR and 6,3 mm-Klinke
Net 1	Interface device	19"	-/-	yes	Ethernet	-/-
EM 3532	dual receiver	19"	36 MHz	via Net 1	via Net 1	XLR
EM 550 [Ⓔ]	dual receiver	19"	36 MHz	via Net 1	via Net 1	XLR
EM 500 [Ⓔ]	single receiver	½ 19"	36 MHz	via Net 1	via Net 1	XLR and 6,3 mm-Klinke
EM 300 [Ⓔ]	single receiver	½ 19"	36 MHz	via Net 1	via Net 1	XLR and 6,3 mm-Klinke
SR 350 [Ⓔ]	dual transmitter	19"	36 MHz	via Net 1	via Net 1	XLR
SR 300 IEM [Ⓔ]	single transmitter	½ 19"	36 MHz	via Net 1	via Net 1	XLR

